

Version: 2010-07-15

| PRESSE PRESS | KOPF HEAD | GESTELL FRAME | max. Presskraft** | | max. Hub max. stroke | C | S | K | M | BxT | L | Tisch- bohrung Table bore l Ø H7 | Ge- wicht kompl. total weight | Ge- wicht Kopf Head weight | max. Aufbie- gung* max. deflec- tion* | Moy zul. Moment allow. moment | E | F | G | H | J | Klemmverschraubung der Pressenköpfe Klemm- schrauben Anzugs- moment Tightening press heads screw size torque | | max. Rück- hubkraft** max. return force** |
|-----------------|-----------------|------------------|-------------------|-------|-------------------------|-----|---------|-----|-----|---------|-----|---|---|--|--|---|------|-----|-----|-----|-----|--|------|--|
| | | | [kN] | [lbf] | | | | | | | | | | | | | | | | | | [Nm] | [Nm] | |
| PFS 002.000 | PKS 002.080.000 | PGS 002.000 | 2 | 450 | 80 | 90 | 70-125 | 55 | 465 | 110x90 | 260 | 20 | 25 | 12,5 | 0,05 | 25 | 9 | 72 | 203 | 76 | 1/4 | M 12 | 45 | 1 |
| PFL 004.000 | PKL 004.080.000 | PGL 008.000 | 4 | 899 | 80 | 120 | 100-295 | 95 | 674 | 150x125 | 339 | 20 | 50 | 16,9 | 0,15 | 25 | 9 | 94 | 263 | 110 | 1/4 | M 12 | 90 | 1 |
| PFL 008.000 | PKL 008.080.000 | PGL 008.000 | 8,5 | 1911 | 80 | 120 | 70-270 | 95 | 674 | 150x125 | 339 | 20 | 46 | 23,2 | 0,2 | 25 | 9 | 94 | 263 | 110 | 1/2 | M 12 | 135 | 4 |
| PFL 013.000 | PKL 013.080.000 | PGL 025.000 | 13,5 | 2922 | 80 | 165 | 75-370 | 115 | 800 | 200x180 | 439 | 20 | 96 | 31,6 | 0,5 | 25 | 11 | 120 | 330 | 144 | 1/2 | M 12 | 135 | 4 |
| PFL 022.000 | PKL 022.080.000 | PGL 025.000 | 22,5 | 5058 | 80 | 165 | 90-370 | 115 | 800 | 200x180 | 439 | 20 | 116 | 49,7 | 0,45 | 70 | 11 | 120 | 330 | 144 | 1/2 | M 16 | 340 | 11 |
| PFL 033.000 | PKL 033.080.000 | PGL 033.000 | 34,5 | 7756 | 80 | 200 | 95-380 | 125 | 820 | 240x220 | 534 | 25 | 150 | 63,2 | 0,45 | 70 | 13,5 | 158 | 405 | 164 | 1/2 | M 16 | 340 | 11 |
| PFL 056.000 | PKL 056.080.000 | PGL 056.000 | 57,5 | 12926 | 80 | 240 | 95-385 | 160 | 860 | 260x220 | 614 | 30 | 227 | 81,1 | 0,85 | 70 | 13,5 | 178 | 487 | 190 | 1/2 | M 20 | 720 | 11 |
| PFW 004.000 | PKL 004.080.000 | PGW 008.000 | 4 | 899 | 80 | 300 | 240-310 | 150 | 745 | 200x200 | 624 | 20 | 107 | 16,9 | 0,2 | 25 | 13,5 | 145 | 500 | 100 | 1/4 | M 12 | 90 | 1 |
| PFW 008.000 | PKL 008.080.000 | PGW 008.000 | 8,5 | 1911 | 80 | 300 | 210-285 | 150 | 745 | 200x200 | 624 | 20 | 114 | 23,2 | 0,25 | 25 | 13,5 | 145 | 500 | 100 | 1/2 | M 12 | 135 | 4 |
| PFW 013.000 | PKL 013.080.000 | PGW 025.000 | 13,5 | 2922 | 80 | 300 | 210-280 | 180 | 775 | 240x230 | 654 | 20 | 177 | 31,6 | 0,45 | 25 | 13,5 | 145 | 520 | 100 | 1/2 | M 12 | 135 | 4 |
| PFW 022.000 | PKL 022.080.000 | PGW 025.000 | 22,5 | 5058 | 80 | 300 | 225-280 | 180 | 775 | 240x230 | 654 | 20 | 198 | 49,7 | 0,35 | 70 | 13,5 | 145 | 520 | 100 | 1/2 | M 16 | 340 | 11 |
| PFW 033.000 | PKL 033.080.000 | PGW 033.000 | 34,5 | 7756 | 80 | 300 | 225-300 | 190 | 805 | 300x250 | 674 | 25 | 226 | 63,2 | 0,35 | 70 | 13,5 | 160 | 530 | 100 | 1/2 | M 16 | 340 | 11 |
| PFW 056.000 | PKL 056.080.000 | PGW 056.000 | 57,5 | 12926 | 80 | 355 | 215-295 | 215 | 825 | 300x280 | 789 | 30 | 303 | 81,1 | 0,65 | 70 | 13,5 | 210 | 625 | 130 | 1/2 | M 20 | 720 | 11 |

Alle Maße in mm.

*Pressenkopf in oberster Position

**bei 6 bar Luftdruck (max. Betriebsdruck 6 bar, min. 2,5 bar)

C = Ausladung

S = Arbeitshöhe verstellbar

E = Befestigungsbohrung

J = Anschlussquerschnitt [Zoll]

Hubeinstellung:

0,025mm pro Teilstrich

Konformitätserklärung nur für komplette Maschinen

All dimensions in mm

*Press head in uppermost position

**at 6 bar air pressure (max. operating pressure 6 bar, min. 2.5 bar)

C = throat depth

S = Open height, adjustable

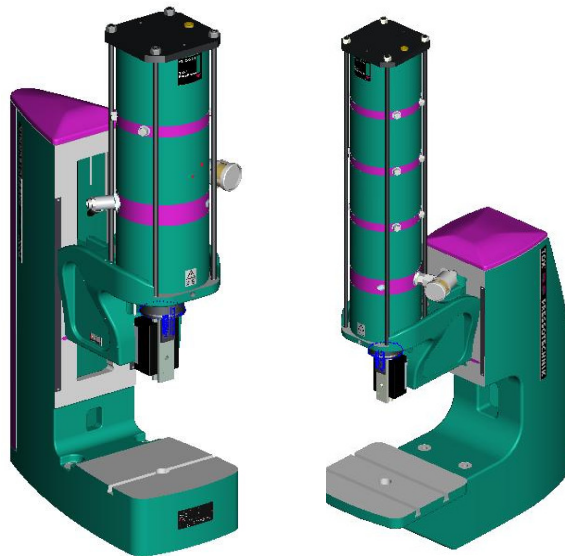
E = Mounting bore

J = Port size (inch)

Stroke adjustment:

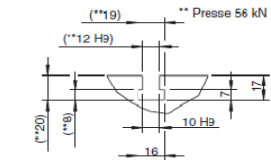
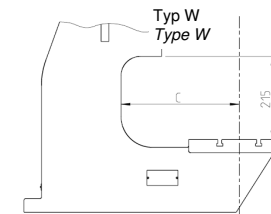
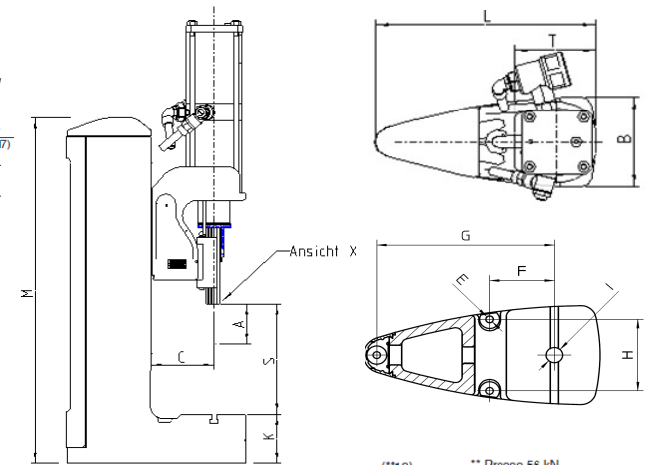
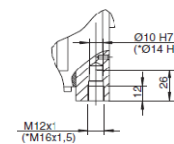
0.025 mm per increment

Conformity Declaration only for complete machines



Ansicht X
* Pressen > 13,5 kN

View X
* Presses > 13,5 kN



Für Gestell W > 8 kN zwei T-Nuten, Nutabstand 100 mm
** Presse 56 kN

For frame size W > 8 kN, two T-slots, spaced 100 mm
** Press 56 kN